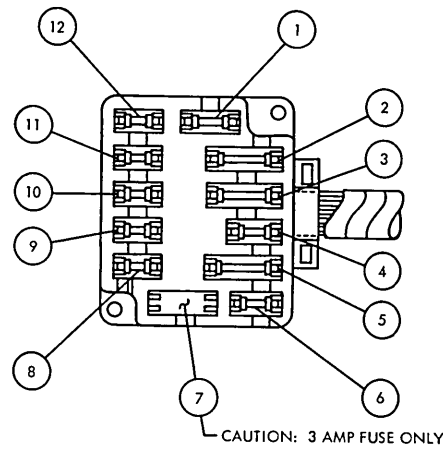


FUSE LOCATIONS



CAUTION: 3 AMP FUSE ONLY

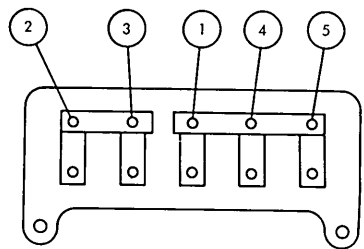
FUSE LOCATIONS

- 1. (7.5 AMP) DUAL BRAKE WARNING LAMP & SEATBELT LP.
- 2. (15 AMP) STEREO TAPE AND KEY WARNING BUZZER FEED - ELECTRIC DECK LID

FUSE LOCATIONS

- 1. (7.5 AMP) DUAL BRAKE WARNING LAMP & SEATBELT LP.
- 2. (15 AMP) STEREO TAPE AND KEY WARNING BUZZER FEED - ELECTRIC DECK LID
- 3. (20 AMP) CIGAR LIGHTER FEED
- 4. (20 AMP) COURTESY LAMP, MAP LAMP, LUGGAGE COMPARTMENT LAMP, VACUUM DOOR LOCK, GLOVE BOX LAMP, CLOCK FEED
- 5. (15 AMP) RADIO FEED
- 6. (6 AMP) INSTRUMENT CLUSTER ILLUM. LAMPS, HEATER SWITCH ILLUM. LAMP, PRNDL LAMP, RADIO DIAL ILLUM. LAMP, AND ASH TRAY LAMP FEED
- 7. (3 AMP) SURE TRACK BRAKE SYSTEM FEED
- 8. (7.5 AMP) BACKLITE DEFOGGER AND W/S WASHER FEED - SPEED CONTROL FEED - HEATED BACKLITE
- 9. (7.5 AMP) TURN SIGNAL SYSTEM FEED
- 10. (7.5 AMP) BACK/UP LAMP
- 11. (7.5 AMP) WINDOW SAFETY RELAY FEED
- 12. (7.5 AMP) LOW FUEL WARNING RELAY FEED

CIRCUIT BREAKER LOCATIONS



CIRCUIT BREAKER LOCATIONS

- 1. (20 AMP) HEATED BACKLITE FEED
- 2. (20 AMP) POWER WINDOW FEED
- 3. (20 AMP) HEATER, MANUAL AIR CONDITIONING AND AUTOMATIC TEMPERATURE CONTROL FEED
- 4. (20 AMP) STOP LAMP, EMERGENCY WARNING FLASHER, AND GRILLE LAMP FEED
- 5. (20 AMP) AUTOMATIC SEAT BACK RELEASE AND HORN FEED

CIRCUIT BREAKERS THAT ARE INTEGRAL PARTS OF COMPONENTS

- 1. (18 AMP) HEADLAMPS AND FIERE LAMP RELAY PART OF LIGHTING SWITCH
- 2. (15 AMP) TAIL LAMPS, PARKING LAMPS, MARKER LAMPS AND INSTRUMENT CLUSTER ILLUMINATION, PART OF LIGHTING SWITCH.

BULB CHART

LAMP DESCRIPTION	CANDLE POWER OR WATTAGE	TRADE NUMBER
BACK-UP	32	1076
C-PILLAR	12	105
DOOR COURTESY	6	212-1
FRONT CORNERING	50	1176
FRONT & REAR MARKER	1	161
FRONT PARK/TURN SIGNAL HEADLAMPS	32-3	1157-A
HI BEAM	50-37.5	4001
LO BEAM	39.5	4002
LICENSE PLATE	4	97
TAIL, STOP AND TURN CLUSTER ILLUM. (PRINTED CIRCUIT)	32-3	1157
HI BEAM INDICATOR	2 C.P.	194
TURN INDICATOR	2 C.P.	194
HEATER & A/C CONTROLS	1.7 C.P.	1895
RADIO PILOT LIGHT	2 C.P.	1895
AUTO TRANS. QUADRANT	.7 C.P.	1445
ASH TRAY ILLUM.	2 C.P.	1895
DUAL BRAKE WARNING	12 C.P.	105
LUGGAGE COMPARTMENT LITE	6 C.P.	90
COURTESY LAMPS (INST. PANEL)	2 C.P.	1895
SEAT BELT WARNING	2 C.P.	1895
PARK BRAKE WARNING	2 C.P.	1895
HEATED BACKLITE INDICATOR		

COMPONENT	LOCATION
AIR CONDITIONER - MANUAL SYSTEM	B21
- AUTOMATIC TEMPERATURE CONTROL SYSTEM	B25
ALTERNATOR	
CIGAR LIGHTERS - FRONT	D48
- REAR	H46 - J47
FLASHERS	
EMERGENCY WARNING	B55
TURN SIGNAL	B56
GAUGES	
AMMETER	G50
FUEL	F34
OIL PRESSURE	F33
TEMPERATURE	F32
HEATED BACKLITE	E63
HEATER SYSTEM	C28
HORNS	K72
IGNITION SYSTEM	B7 & B8
ILLUMINATORS	
ASH TRAY	D49
CLUSTER	G49 - G50
HEATER	F50
PRNDL	E50
RADIO	E50
INDICATORS	
DOOR AJAR	F36 & J35 & K35
DUAL BRAKE WARNING & SURE TRACK	K4 & G6
HEATED BACKLITE	E63
HIGH BEAM	C50
LEFT TURN	E6
LITES ON	F54
LOW FUEL	C33
RIGHT TURN	D58
SEAT BELT	B28
KEY WARNING BUZZER SYSTEM	G39 & H37 & J39 & K38
LAMPS	
AIR CONDITIONER LIGHT	G50
BACKUP LIGHT	J64
"C" PILLAR COURTESY LIGHT	D40
CORNERING LIGHT	
DOOR COURTESY LIGHT	J40 & F43
FIERA LIGHT	
FOOTWELL COURTESY LIGHT	E43
HEADLAMPS	J52, 53, 54 & 55
HEATER LIGHT	
LICENSE PLATE LIGHT	E41
LUGGAGE COMPARTMENT LIGHT	H45
MAP LIGHT	J56 & J57
PARKING LIGHT	J59 & J60
REAR LIGHTS	J58
SIDE MARK LIGHTS - FRONT	J60
- REAR	J59 & J60
SUPPLEMENTAL STOPLAMP	
MOTORS	
AIR CONDITIONER - MANUAL	E28
- ATC	C27
DEFOGGER - REAR WINDOW	J66
HEATER BLOWER	E28
POWER SEAT	G77,78,79,80,81 & 82
POWER WINDOWS	
FRONT DOOR	F7 & K9
REAR DOORS	
REAR QUARTERS	K11 & K13
STARTING	B3
WINDSHIELD WASHER	H66
RADIOS	
AM	B86
AM & FADER	F86
AM & STEREO TAPE UNIT	C86, 87 & 88
AM-FM MULTIPLEX	C86,87 & 88
RELAYS	
FIERA LAMP	B19
HEATER & A/C	J71
HORN	I68
KEY WARNING	B31
LOW FUEL WARNING	D41
MAP LAMP & SEAT BELT	D74
SEAT BACK LATCH	
SUPPLEMENTAL STOPLAMP	C62
HEATED BACKLITE	B11
WINDOW SAFETY	
SENDERS	
FUEL GAUGE	D31
OIL PRESSURE	J33
WATER TEMPERATURE	H32
SENSORS	
AMBIENTS	G21
IN CAR	E21
SPEED CONTROL	G19
SURE TRACK	K6
SEAT BACK LATCH SYSTEM	G74 & G75
SPEED CONTROL SYSTEM	G19
STARTER SYSTEM	B3 & B4
SURE TRACK CONTROL SYSTEM	K4 & K5
SWITCHES	
AIR CONDITIONER CONTROL - MANUAL	B21
- ATC	B25
BACKUP LAMP	E64
COURTESY LAMP - FRONT	D45
- REAR	C45
DEFOGGER	D66
DOOR AJAR - FRONT	G36 & J35
- REAR	K35
DOOR LOCK	C15
DUAL BRAKE WARNING	G6
EMERGENCY WARNING	B55
HEADLAMP DIMMER	C32 C53
HEATED BACKLITE	D61
HEATER & A/C	F24
IGNITION	B8
LIGHT	B51, 52 & 53
KEY WARNING BUZZER	J38
POWER SEAT	B81 & B78
POWER WINDOWS	
FRONT DOOR	C7, C8 & H8
REAR DOOR	C11 & C13
REAR QUARTER	H11 & H13
SPEED CONTROL	H19
STOPLAMP	C55
SURE TRACK ACTUATOR	K4 & K5
TURN SIGNAL	B56 & B57
WINDSHIELD WASHER	C49